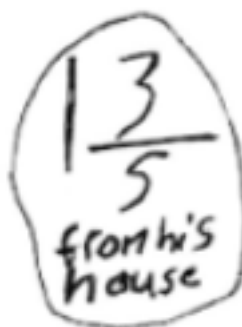


The distance from Billy's house to work is  $2\frac{1}{5}$  miles.

His car broke down  $\frac{3}{5}$  mile from work

How far is Billy from his house? Show your work.

$$2\frac{1}{5} - \frac{3}{5} = \frac{13}{5}$$



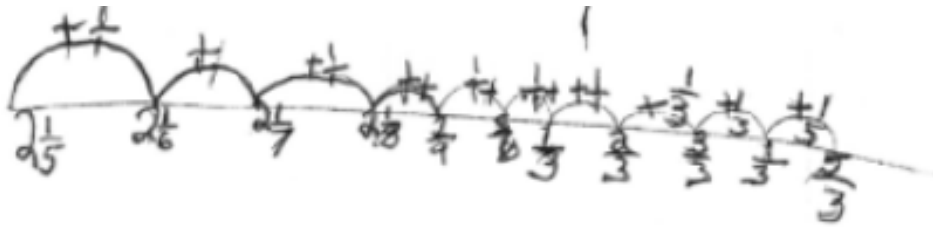
$$2\frac{1}{5} - \frac{1}{5} = 2$$

$$2 - \frac{2}{5} = \left(\frac{13}{5}\right)$$

The distance from Billy's house to work is  $2\frac{1}{5}$  miles.

His car broke down  $\frac{3}{5}$  mile from work

How far is Billy from his house? Show your work.



$$\frac{1}{7} + \frac{1}{8} + \frac{1}{9} + \frac{1}{10} + \frac{1}{11} + \frac{1}{12} = \frac{1}{6}$$

$$\frac{1}{3} + \frac{1}{3} + \frac{1}{3} + \frac{1}{3} = \frac{4}{3}$$

$$\frac{1}{6} + 4 = \frac{5}{9}$$

The distance from Billy's house to work is  $2\frac{1}{5}$  miles.

His car broke down  $\frac{3}{5}$  mile from work

How far is Billy from his house? Show your work.

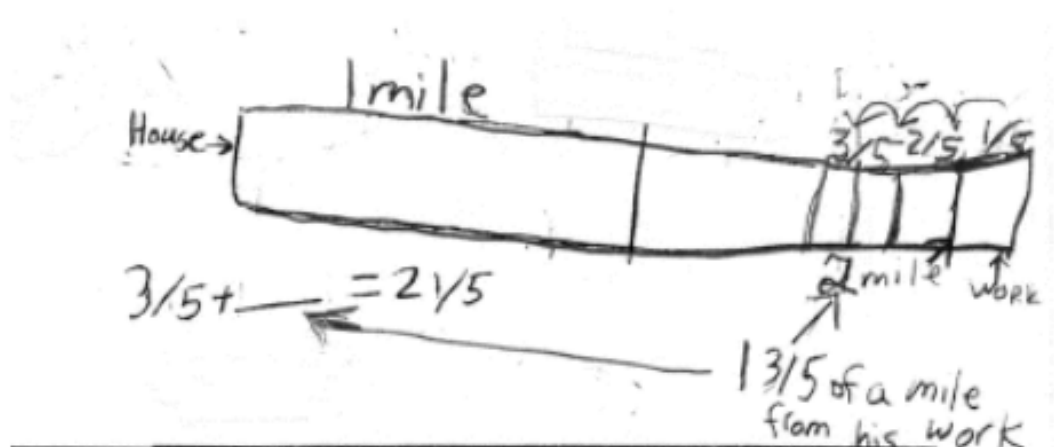
$$2\frac{1}{5} - \frac{3}{5} = 1\frac{4}{5}$$

$1\frac{4}{5}$  miles

The distance from Billy's house to work is  $2\frac{1}{5}$  miles.

His car broke down  $\frac{3}{5}$  mile from work

How far is Billy from his house? Show your work.



The distance from Billy's house to work is  $2\frac{1}{5}$  miles.

His car broke down  $\frac{3}{5}$  mile from work

How far is Billy from his house? Show your work.

$$2\frac{1}{5} - \frac{3}{5}$$

$$\begin{aligned} 2\frac{1}{5} - \frac{1}{5} &= 2 \text{ miles} \\ 2 - \frac{1}{5} &= 1\frac{4}{5} \text{ miles} \\ 1\frac{4}{5} - \frac{1}{5} &= 1\frac{3}{5} \text{ miles} \end{aligned}$$

The distance from Billy's house to work is  $2\frac{1}{5}$  miles.

His car broke down  $\frac{3}{5}$  mile from work

How far is Billy from his house? Show your work.

15 miles

because I know  $3 \times 5 = 15$  so that must be the Answer.

$\frac{1}{5}$  miles

$\frac{3}{5}$  miles from Work

The distance from Billy's house to work is  $2\frac{1}{5}$  miles.

His car broke down  $\frac{3}{5}$  mile from work

How far is Billy from his house? Show your work.

$$2\frac{1}{5} - \frac{1}{5} = 2$$

$$2 - \frac{1}{5} = 1\frac{4}{5}$$

$1\frac{4}{5}$  miles

The distance from Billy's house to work is  $2\frac{1}{5}$  miles.

His car broke down  $\frac{3}{5}$  mile from work

How far is Billy from his house? Show your work

