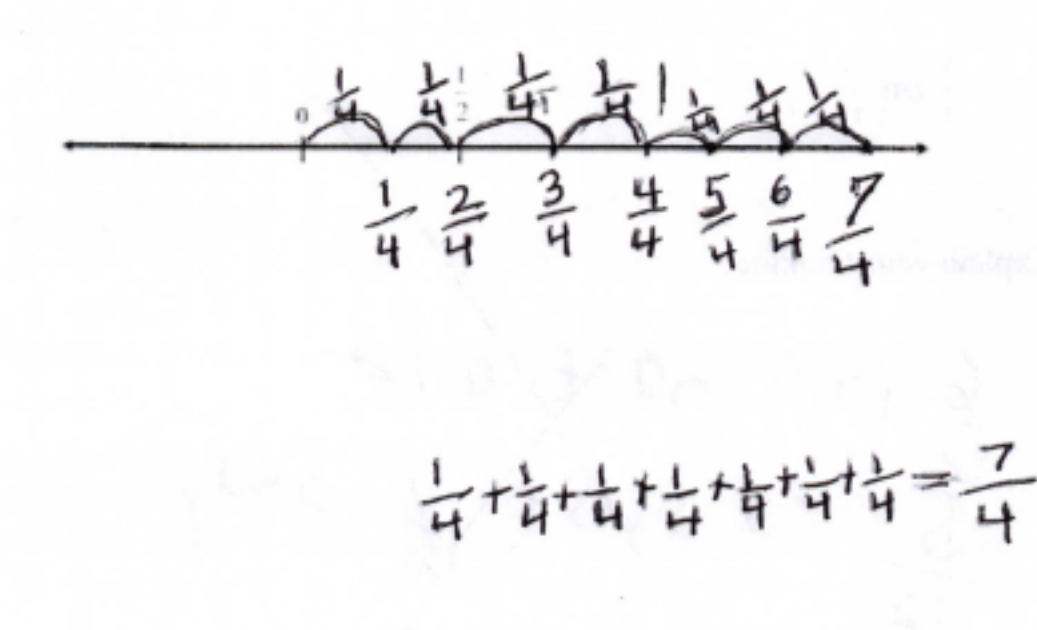


Number Line Case Study



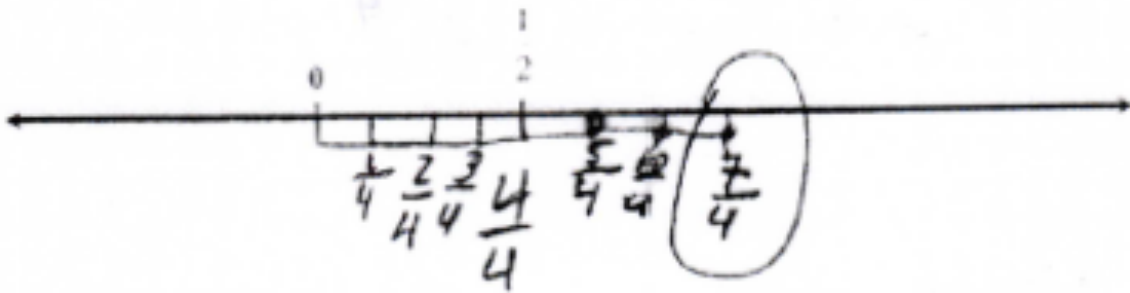
Draw and label a point on the number line to show where $\frac{7}{4}$ is located.



Number Line Case Study

B

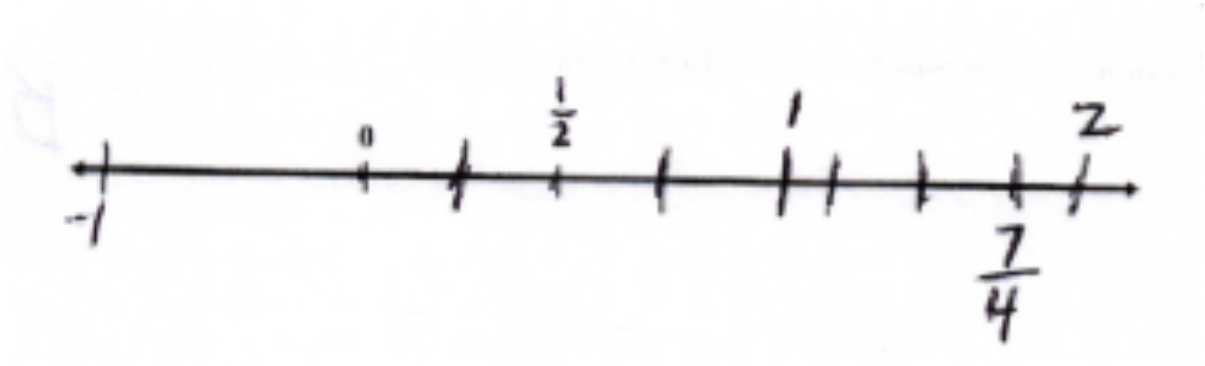
Draw and label a point on the number line to show where $\frac{7}{4}$ is located.



Number Line Case Study

C

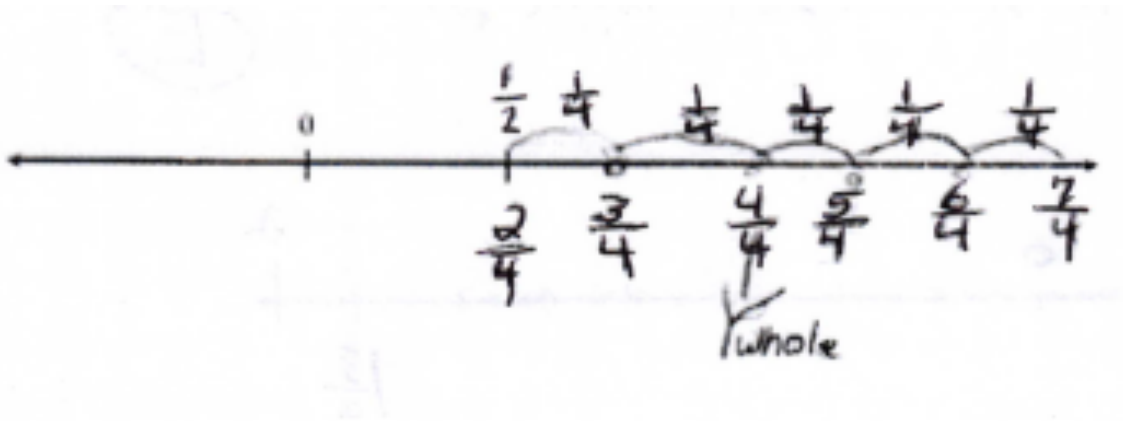
Draw and label a point on the number line to show where $\frac{7}{4}$ is located.



Number Line Case Study

D

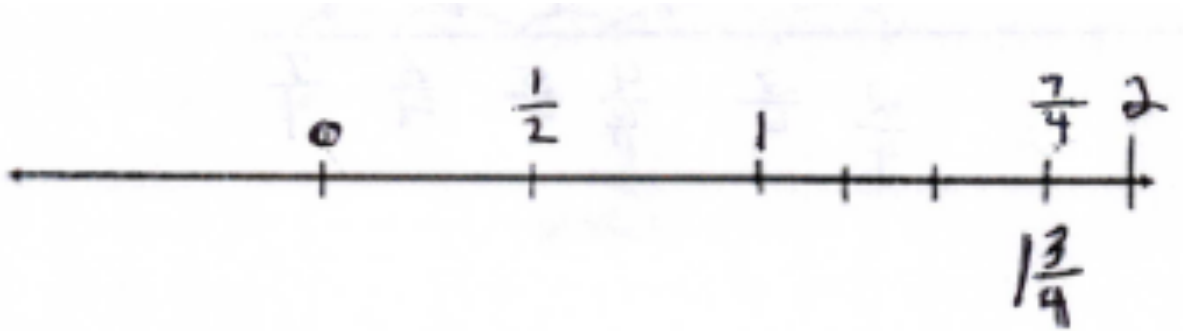
Draw and label a point on the number line to show where $\frac{7}{4}$ is located.



Number Line Case Study

E

Draw and label a point on the number line to show where $\frac{7}{4}$ is located.



Number Line Case Study

F

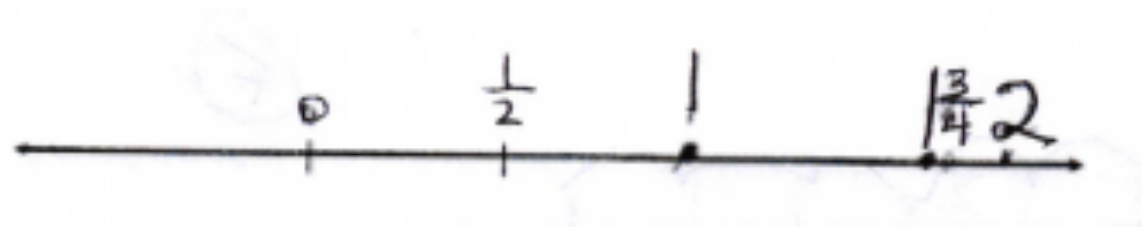
Draw and label a point on the number line to show where $\frac{7}{4}$ is located.



Number Line Case Study

G

Draw and label a point on the number line to show where $\frac{7}{4}$ is located.



Number Line Case Study

H

Draw and label a point on the number line to show where $\frac{7}{4}$ is located.

